

# Corporate Data (As of March 31, 2011)

**Established:** June 1957  
**Paid-in Capital:** ¥48,592 million  
**Employees:** 11,522  
**Home Page Address:** <http://world.casio.com/>

## Domestic Offices

### Head Office

6-2, Hon-machi 1-chome,  
 Shibuya-ku, Tokyo 151-8543

### IR Department

Tel: (03) 5334-4803

## R&D Centers

### Hamura Research & Development Center

2-1, Sakae-cho 3-chome  
 Hamura City, Tokyo 205-8555  
 Tel: (042) 579-7111

### Hachioji Research & Development Center

2951-5, Ishikawa-cho,  
 Hachioji City, Tokyo 192-8556  
 Tel: (042) 639-5111

## Overseas Offices

### Casio America, Inc.

570 Mt. Pleasant Avenue,  
 Dover, New Jersey 07801,  
 United States  
 Tel: 973-361-5400

### Casio Europe GmbH

Casio-Platz 1 22848  
 Norderstedt, F.R. Germany  
 Tel: 040-528-65-0

# Investor Information (As of March 31, 2011)

## Stock Exchange Listings

Tokyo

## Transfer Agent

The Sumitomo Trust and Banking Co., Ltd.

## Number of Shares

Authorized: 471,693,000 shares  
 Issued: 279,020,914 shares

## Number of Shareholders

56,250

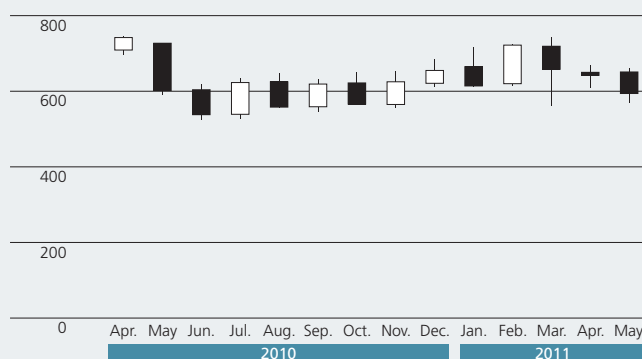
## Principal Shareholders

	Shareholdings (thousands)	% of outstanding share*
Japan Trustee Services Bank, Ltd. (Trust Account)	17,106	6.36
The Master Trust Bank of Japan, Ltd. (Trust Account)	15,940	5.93
Nippon Life Insurance Company	13,669	5.08
Casio Bros. Corp.	10,000	3.72
Japan Trustee Services Bank, Ltd. (The Sumitomo Trust and Banking Co., Ltd. Re-trust Portion, Sumitomo Mitsui Banking Corp. Pension Trust Account)	9,865	3.67
Sumitomo Mitsui Banking Corp.	6,821	2.54
Trust & Custody Services Bank, Ltd. (Securities Investment Trust Account)	5,863	2.18
Japan Trustee Services Bank, Ltd. (Trust Account 9)	4,987	1.86
The Nomura Trust and Banking Co., Ltd.	4,901	1.82
Toshio Kashio	4,362	1.62

\* Outstanding shares are calculated after deduction of shares in treasury (10,166,355).

## Share Price

(Yen)



## Breakdown of Shareholders

