

Investor Information (As of March 31, 2007)

Stock Exchange Listings

Tokyo

Transfer Agent

The Sumitomo Trust and Banking Corporation
Stock Transfer Agency Dept.
4-4, Marunouchi 1-chome, Chiyoda-ku,
Tokyo 100-8233, Japan

Number of Shares

Authorized: 471,693,000 shares
Issued: 279,020,914 shares*

Number of Shareholders

29,560

* The number of shares issued at the reporting term-end increased by 8,578,046 shares compared with the previous term-end, as a result of the conversion of bonds with stock acquisition rights.

Principal Shareholders

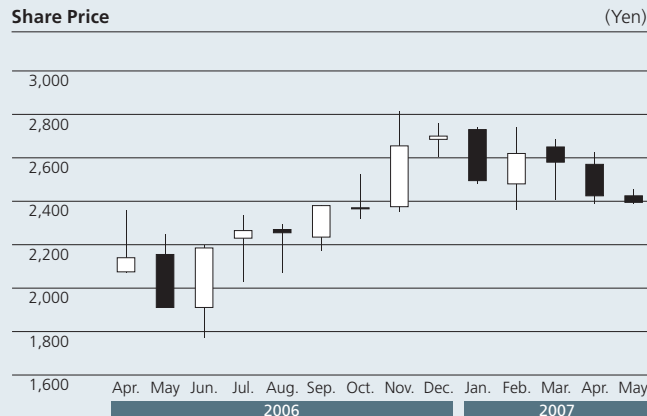
	Shareholdings (thousands)	% of outstanding share*
The Master Trust Bank of Japan, Ltd. (Trust Account)	28,155	10.21%
Japan Trustee Services Bank, Ltd. (Trust Account)	15,838	5.74
Nippon Life Insurance Company	13,669	4.95
Casio Bros. Corp.	10,000	3.62
Japan Trustee Services Bank, Ltd. (The Sumitomo Trust and Banking Co., Ltd. Retrust Portion, Sumitomo Mitsui Banking Corp. Pension Trust Account)	9,865	3.58
Sumitomo Mitsui Banking Corp.	6,789	2.46
The Bank of Tokyo-Mitsubishi UFJ, Ltd.	5,077	1.84
Toshio Kashio	4,834	1.75
The Chase Manhattan Bank 385036	4,180	1.52
Mitsui Sumitomo Insurance Co., Ltd.	4,122	1.49

* Outstanding shares are calculated after deduction of shares in treasury (3,124,881).

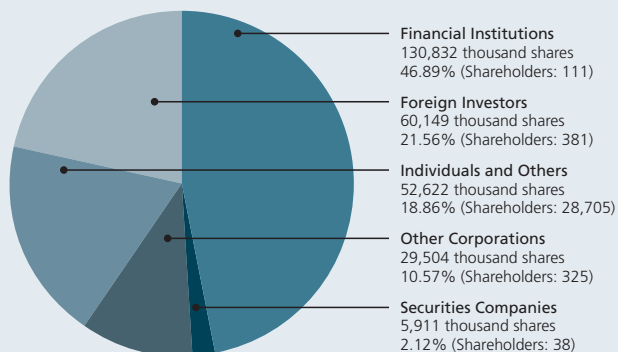
Share Price Range

Year	Month	Yen		
		High	Low	
2006	Apr.	¥2,360	¥2,070	
	May	2,250	1,907	
	Jun.	2,195	1,770	
	Jul.	2,335	2,030	
	Aug.	2,295	2,070	
	Sep.	2,380	2,170	
	Oct.	2,525	2,320	
	Nov.	2,815	2,350	
	Dec.	2,760	2,605	
	2007	Jan.	2,740	2,480
		Feb.	2,740	2,360
		Mar.	2,685	2,405
Apr.		2,625	2,390	
May		2,455	2,390	

Share Price



Breakdown of Shareholders



Breakdown of Shareholdings by Size

