

Investor Information

Stock Exchange Listings

Tokyo, Osaka, Amsterdam, and Frankfurt

Transfer Agent

The Sumitomo Trust and Banking Corporation
Stock Transfer Agency Dept.
4-4, Marunouchi 1-chome, Chiyoda-ku,
Tokyo 100-8233, Japan

Number of Shares

Authorized: 471,693,000 shares
Issued: 270,442,868 shares

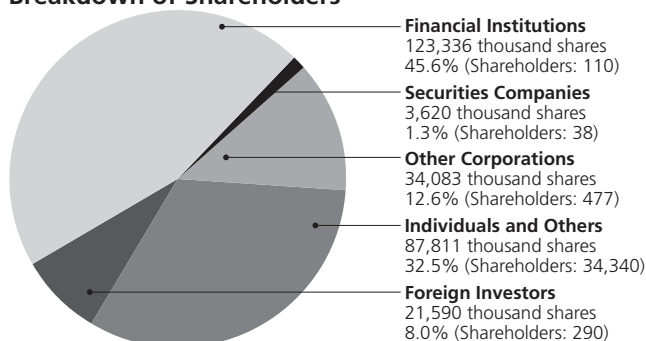
Number of Shareholders

35,255

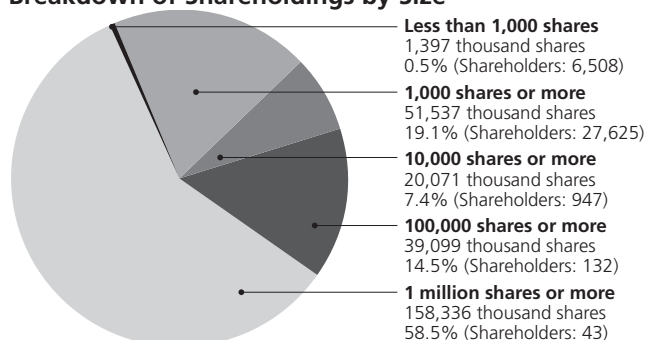
Principal Shareholders

	Shareholdings (thousands)	Outstand- ing voting share
Nippon Life Insurance Company	13,670	5.11%
Sumitomo Mitsui Banking Corp.	13,370	5.00
Japan Trustee Services Bank, Ltd. (Trust Account)	13,211	4.94
Casio Bros. Corp.	10,000	3.74
The Master Trust Bank of Japan, Ltd. (Trust Account)	9,113	3.41
UFJ Trust Bank, Ltd. (Trust Account A)	5,814	2.17
Toshio Kashio	5,357	2.00
UFJ Bank Limited	4,947	1.85
Sumitomo Life Insurance Company	4,906	1.83
Mitsui Sumitomo Insurance Co., Ltd.	4,582	1.71

Breakdown of Shareholders



Breakdown of Shareholdings by Size



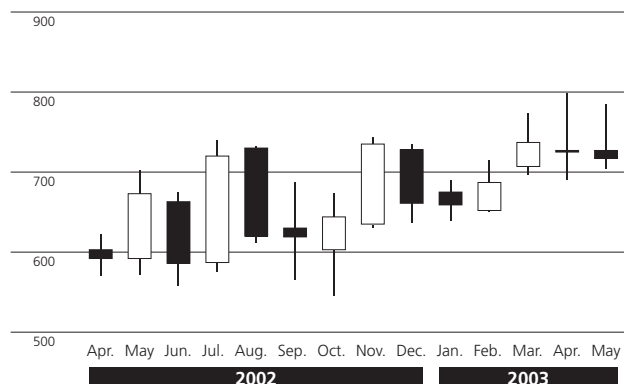
(As of March 31, 2003)

Share Price Range

Year	Month	Yen		
		High	Low	
2002	Apr.	¥622	¥570	
	May	703	572	
	Jun.	675	558	
	Jul.	740	576	
	Aug.	733	612	
	Sep.	688	566	
	Oct.	674	546	
	Nov.	743	630	
	Dec.	735	637	
	2003	Jan.	690	639
		Feb.	715	651
		Mar.	773	696
Apr.		798	690	
May		785	704	

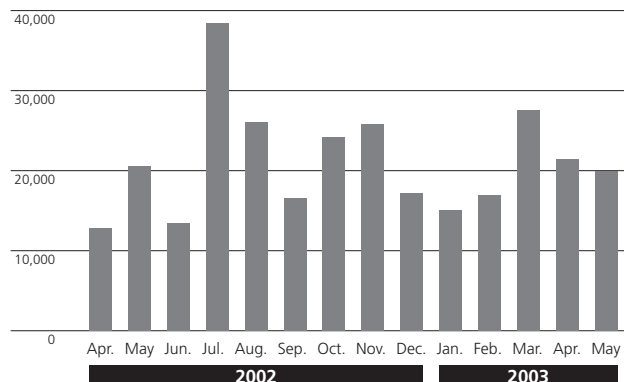
Share Price

(Yen)



Trading Volume

(Thousand Shares)



(As of May 31, 2003)